



**edificio de departamentos
san jacinto, cayma,
arequipa, 2025**

las crujías del edificio se acomodan, aterrazan y perforan para responder a los dos frentes en desnivel del predio y para construir paisajes internos que se transversalizan hacia ambas calles

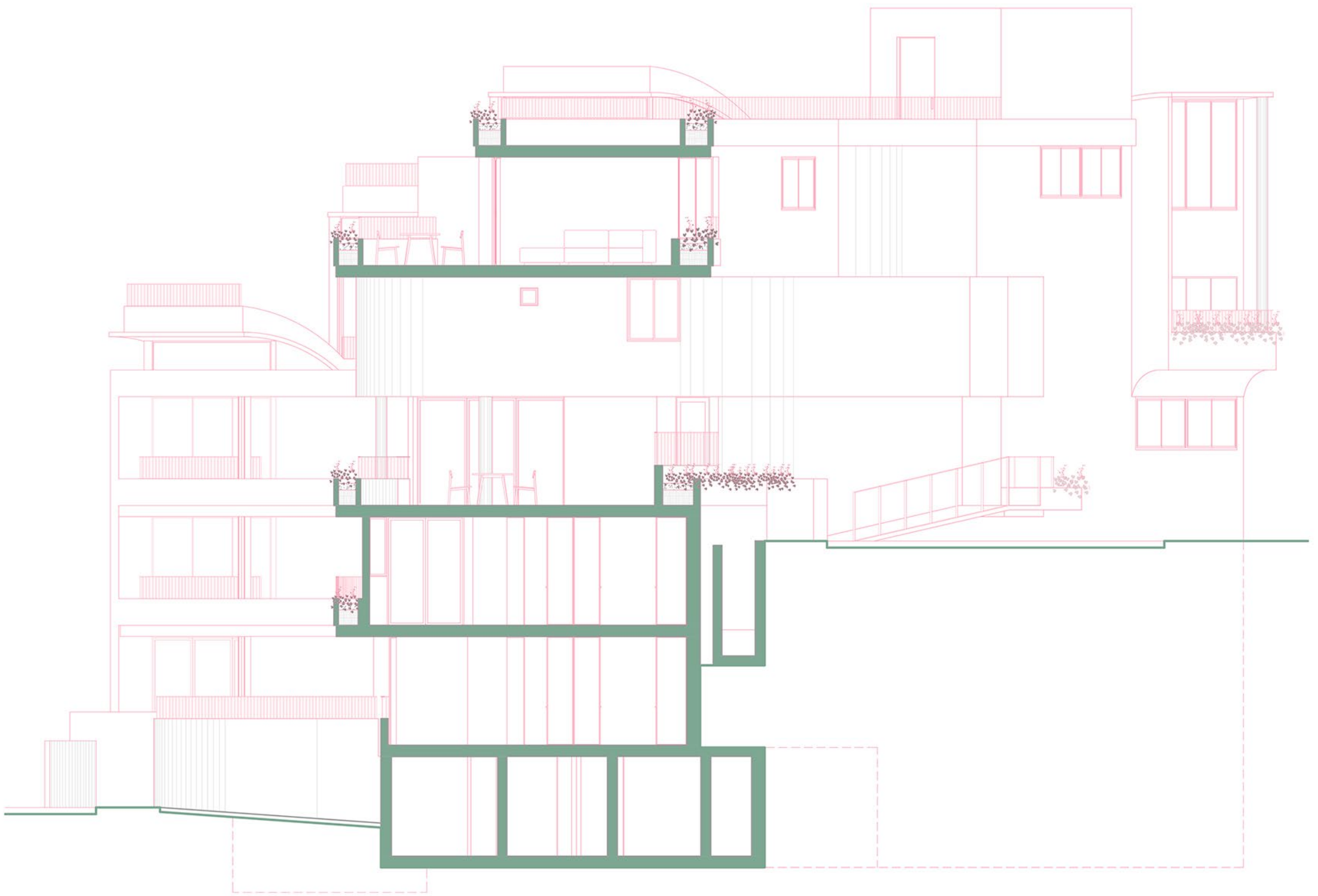


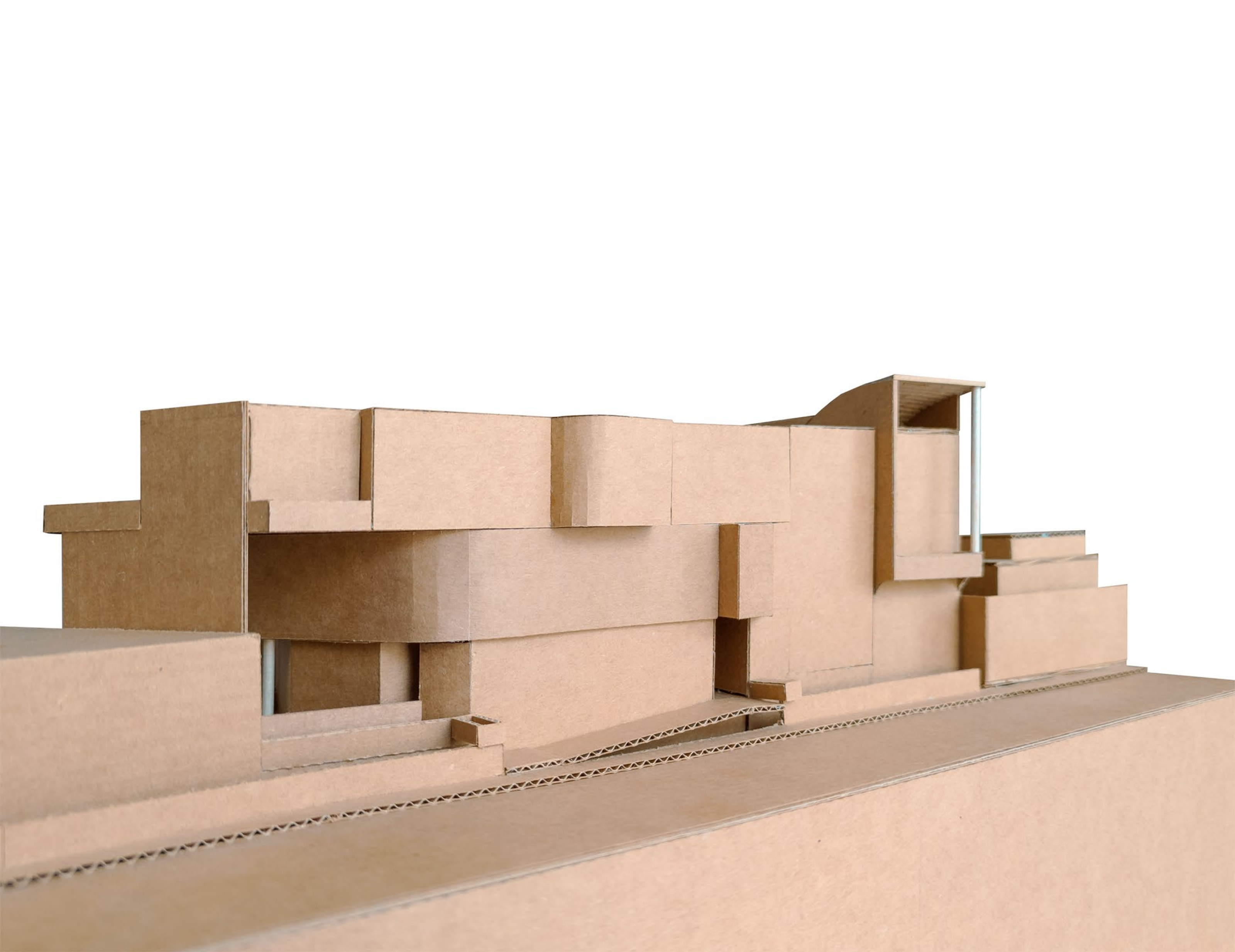






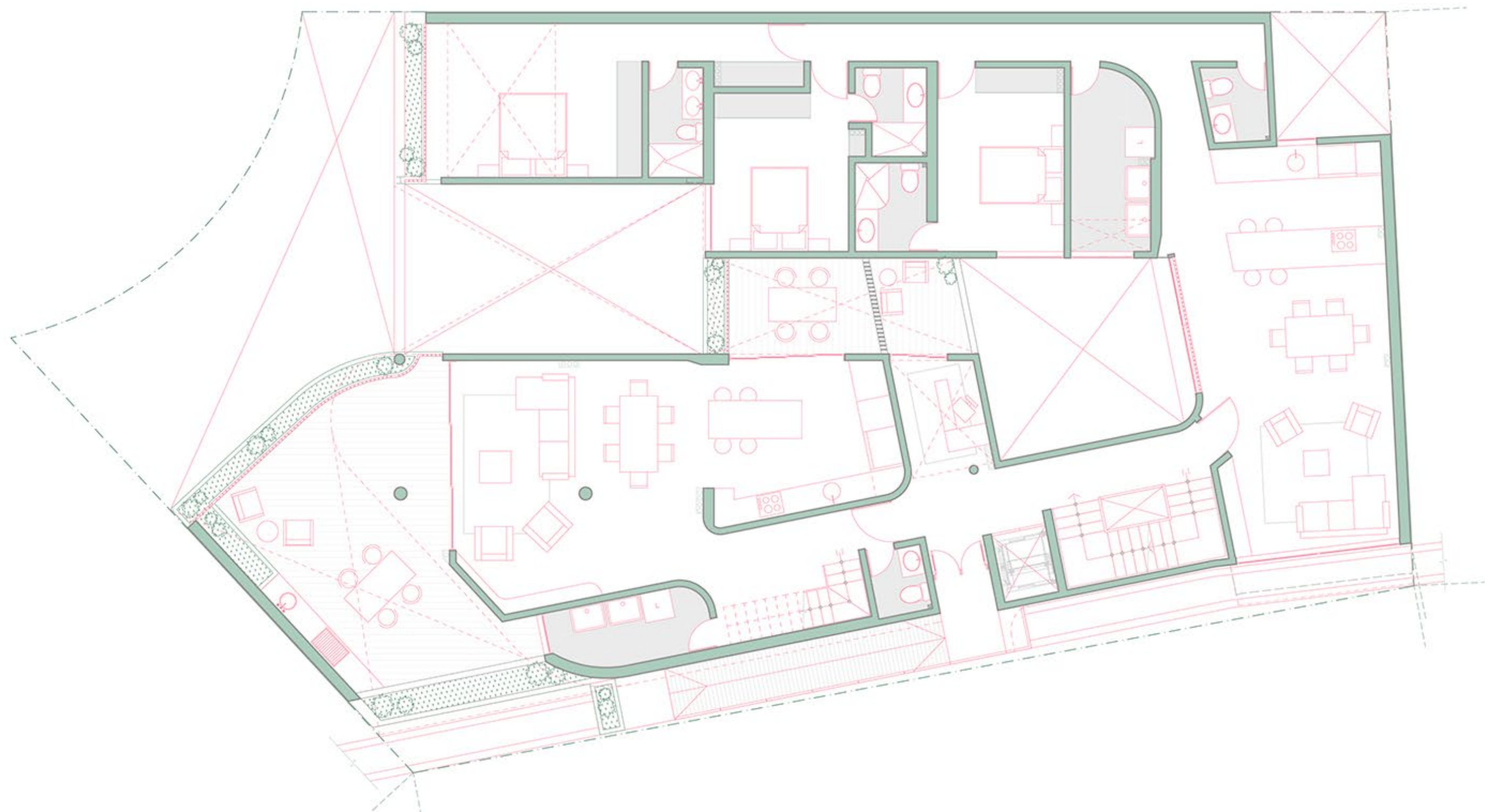
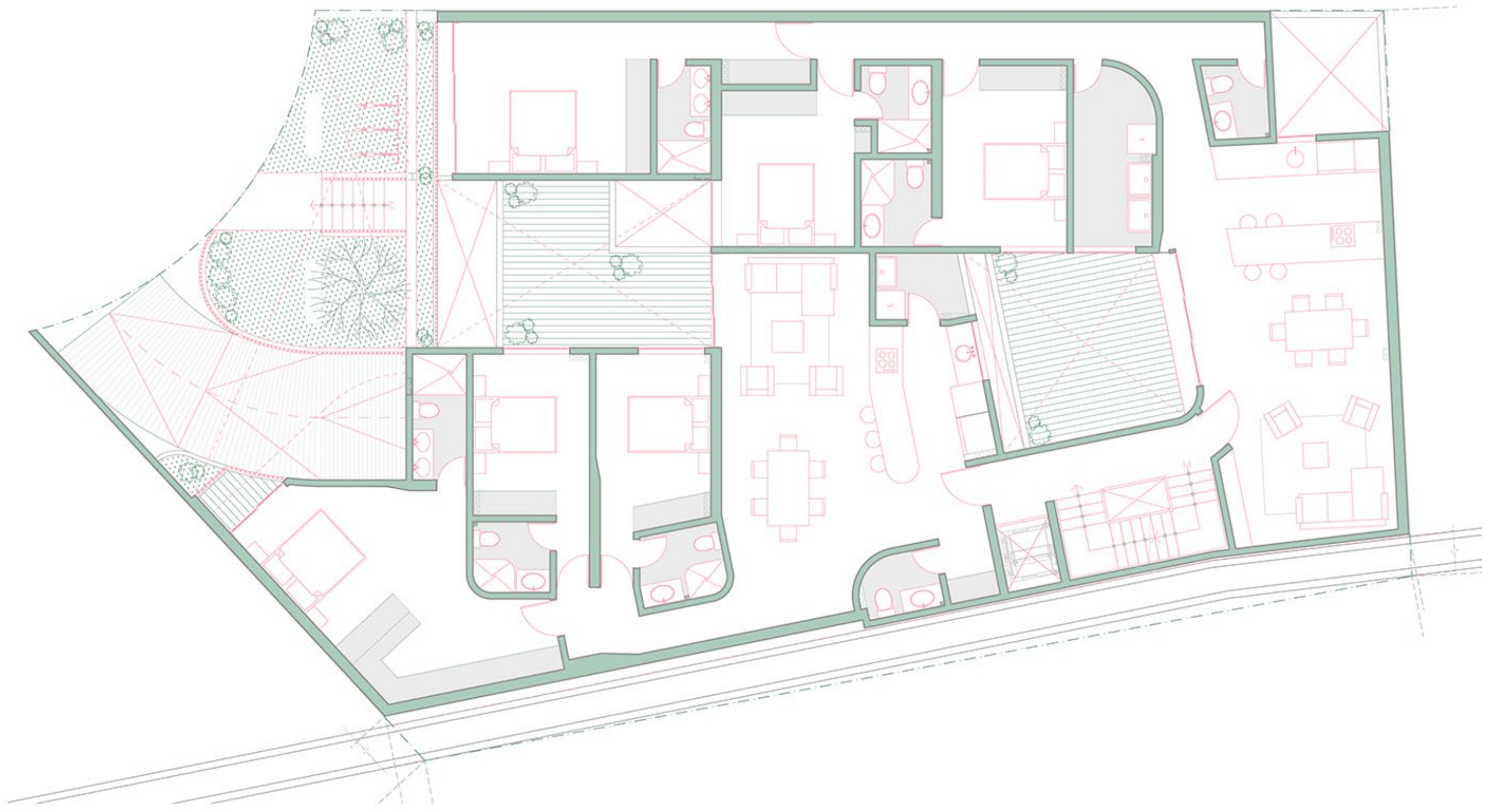


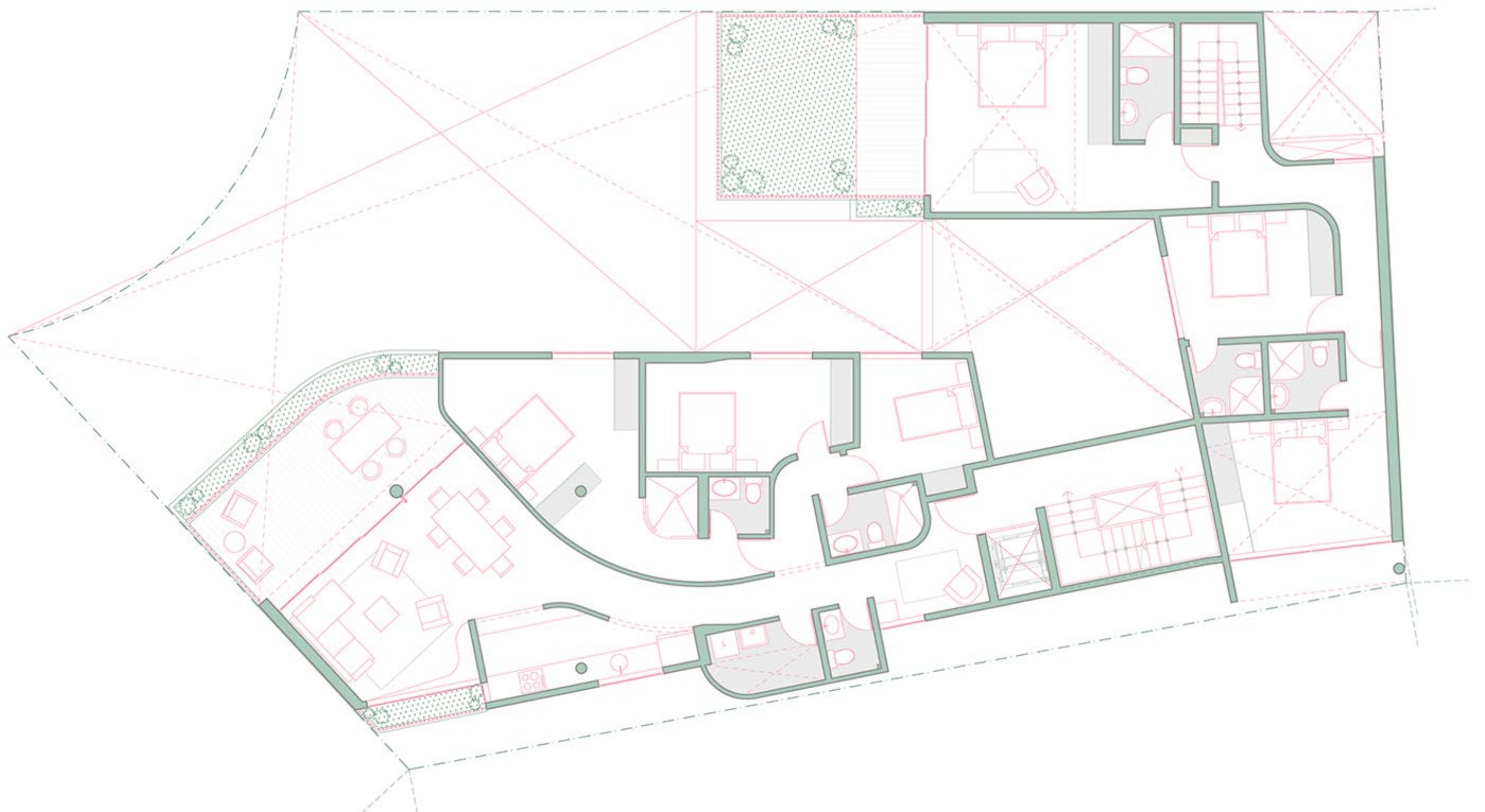
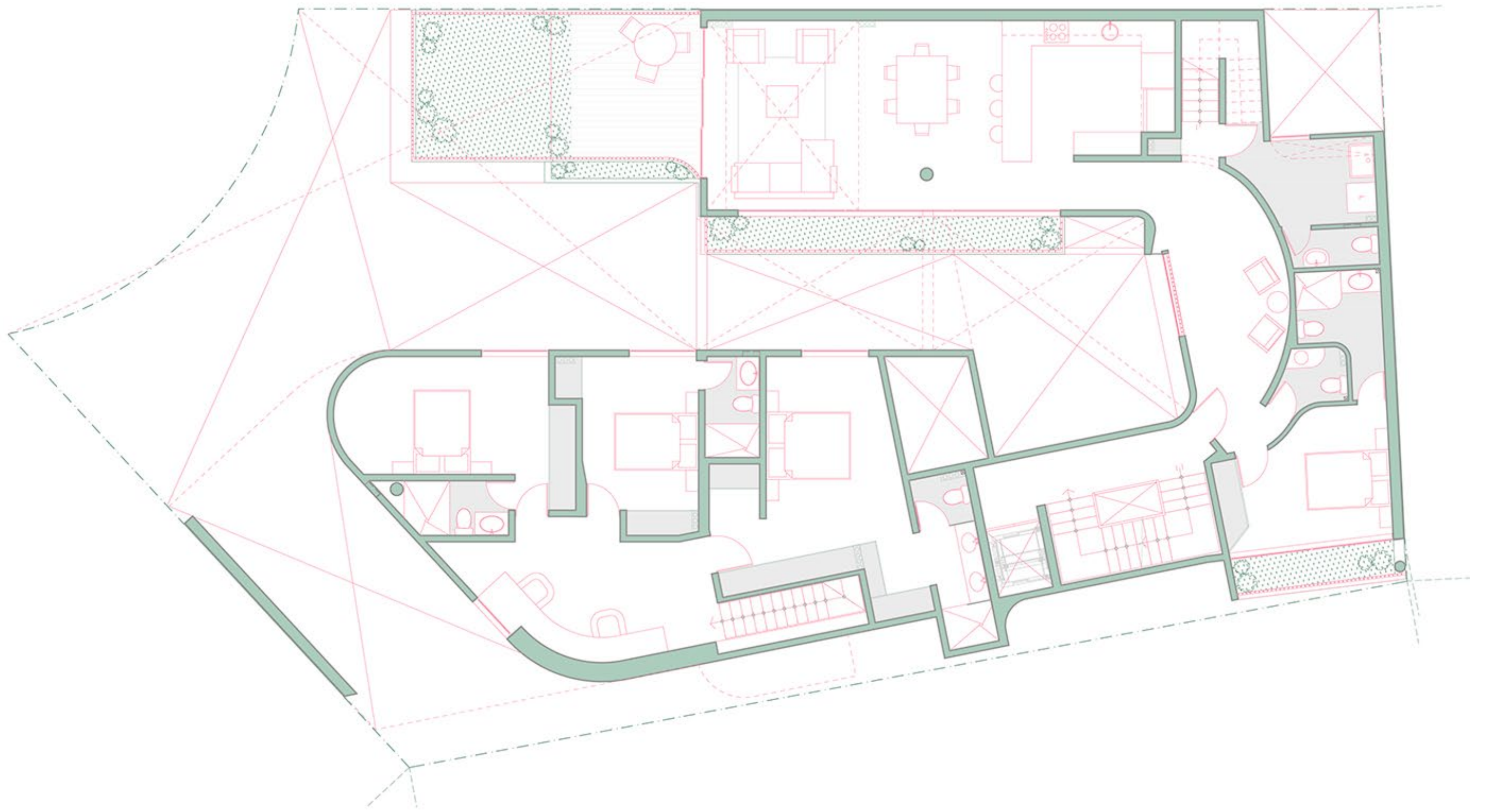




















**MUÑOZ
ESTUDIO DE
ARQUITECTURA**

www.josemunoz.pe